



## Linear Grille Configuration

MODEL:

**LGC**

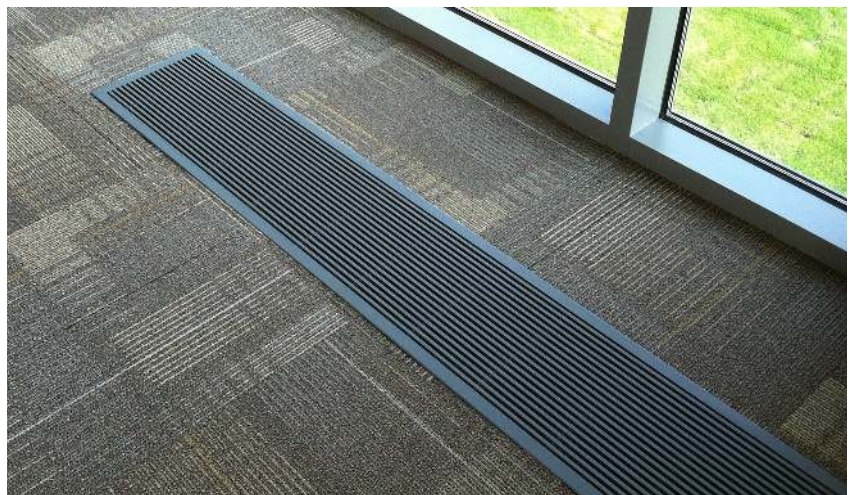
### DESCRIPTION:

**LGC (Linear Grille Configuration)** options are designed for use with the FlexSys line of linear air terminals. Alternatively, they can be mounted directly in a raised access floor or perimeter trench.

Linear grilles are made of extruded aluminum, with an 800–1250 lb. (363–567 Kg) force rating (varies based on grille depth / width). 1/4" (6mm) linear bars with a 15° air flow angle are standard, with alternative options available.

All grilles are fully manufactured to specification, in a variety of dimensions and configurations. Ten (10) standard colors are available; custom colors and finishes can be provided to match architectural design.

Optional blank-off plates prevent under floor plenum air leakage through aesthetic sections of linear grille that are not mounted in a sealed air terminal.



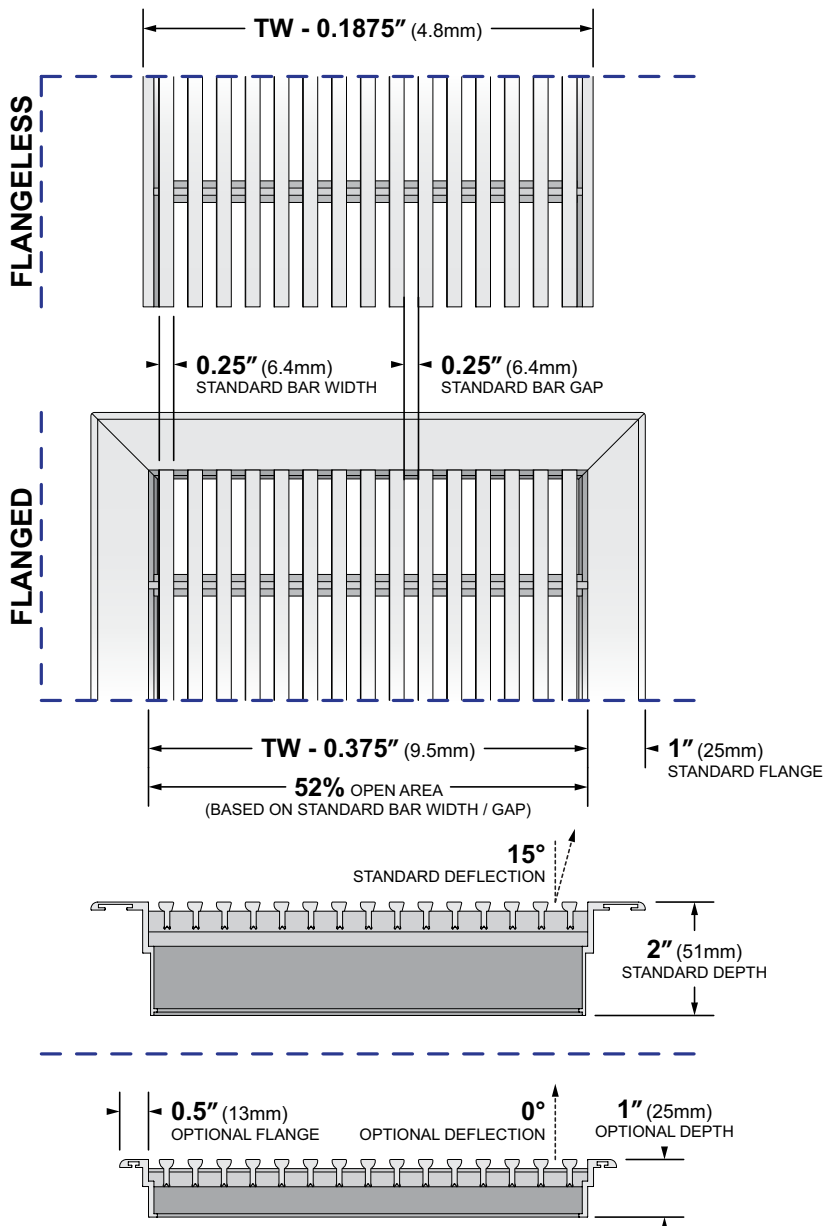
# Linear Grille Configuration

## LGC

MODEL:

### CONFIGURATION:

**TW** TERMINAL WIDTH



- 00**
  - Flangeless on all sides and ends
- 20**
  - Flanges on sides only
- 3L**
  - Flanges on sides and left end
- 3R**
  - Flanges on sides and right end
- 40**
  - Flanges on sides and ends

ALL DIMENSIONS NOMINAL +/- 0.1" (2.5mm)

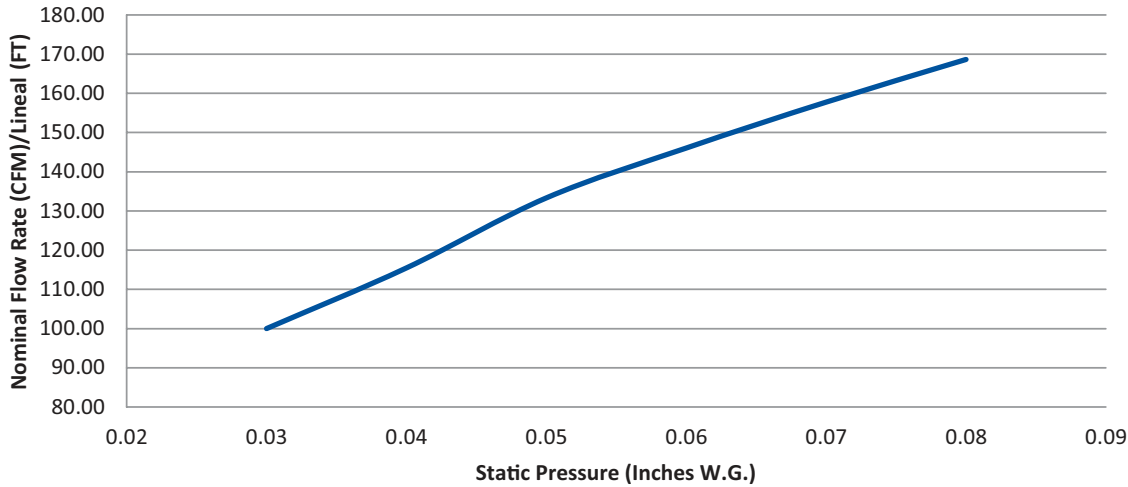


# Linear Grille Configuration

MODEL: **LGC**

## 4" (102mm) Wide Performance:

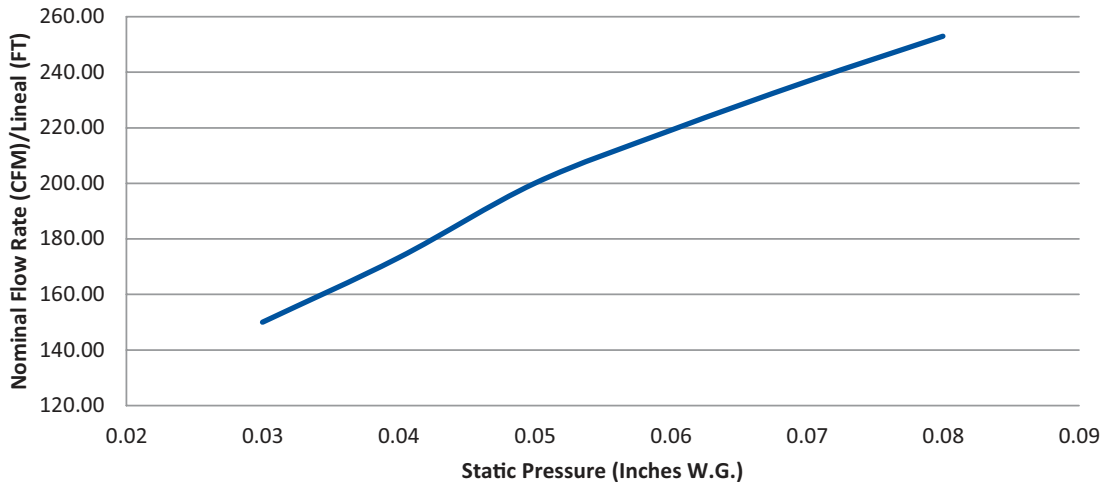
Air Flow Performance Per Linear Foot  
Based on 4" (102mm) Wide Grille



NOTE: Air flow is dependant on grille inlet conditions.

## 6" (152mm) Wide Performance:

Air Flow Performance Per Linear Foot  
Based on 6" (152mm) Wide Grille



NOTE: Air flow is dependant on grille inlet conditions.

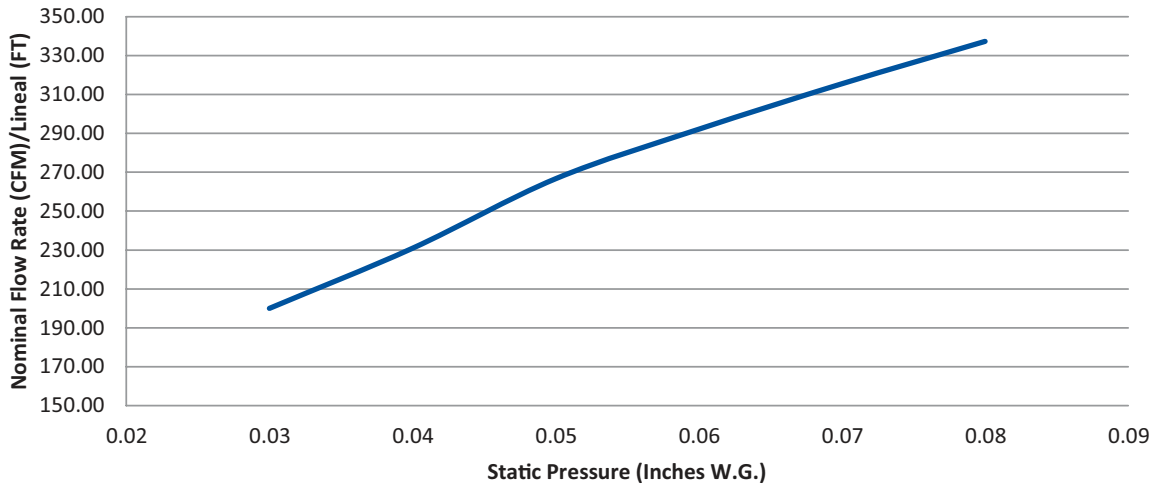


# Linear Grille Configuration

MODEL: **LGC**

## 8" (203mm) Wide Performance:

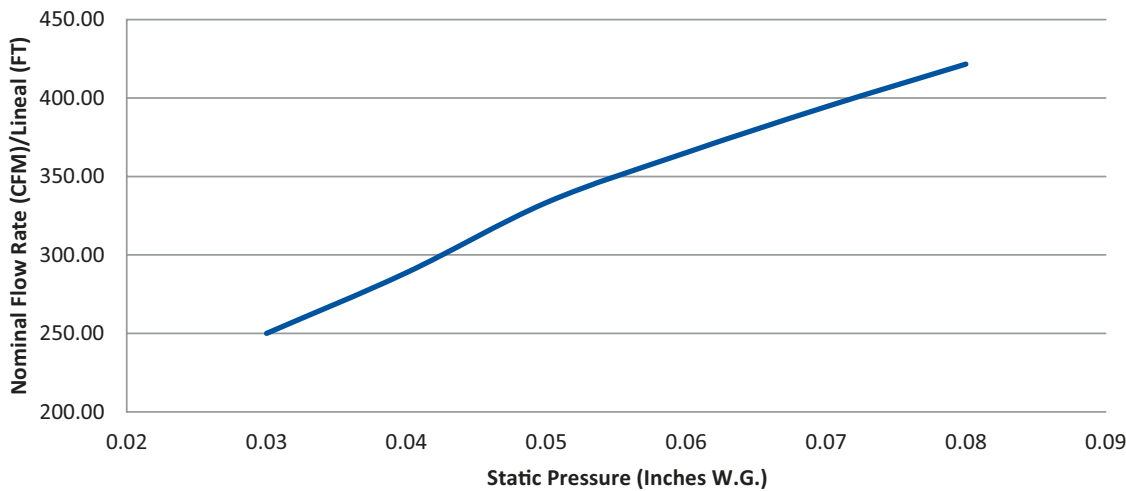
Air Flow Performance Per Linear Foot  
Based on 8" (203mm) Wide Grille



NOTE: Air flow is dependant on grille inlet conditions.

## 10" (254mm) Wide Performance:

Air Flow Performance Per Linear Foot  
Based on 10" (254mm) Wide Grille



NOTE: Air flow is dependant on grille inlet conditions.

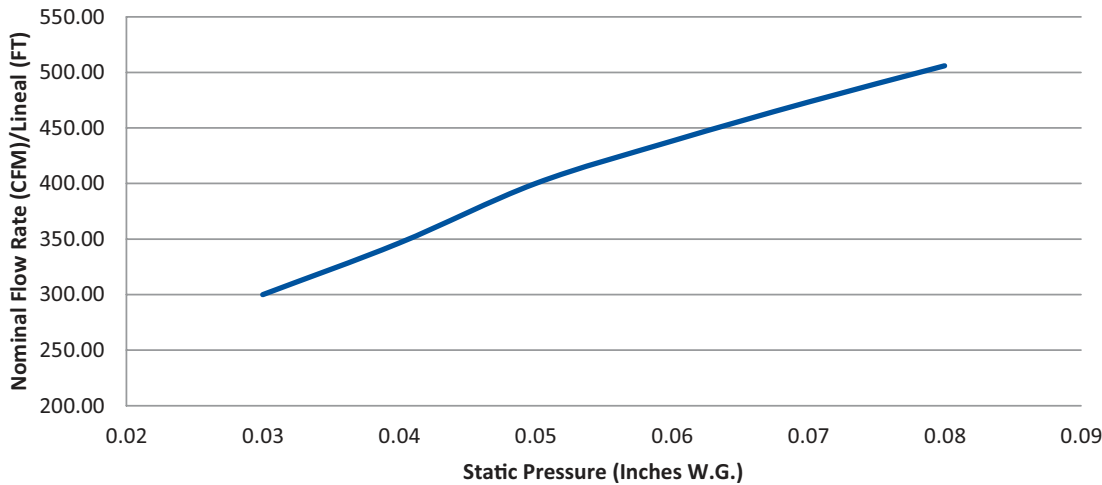


# Linear Grille Configuration

MODEL: **LGC**

## 12" (305mm) Wide Performance:

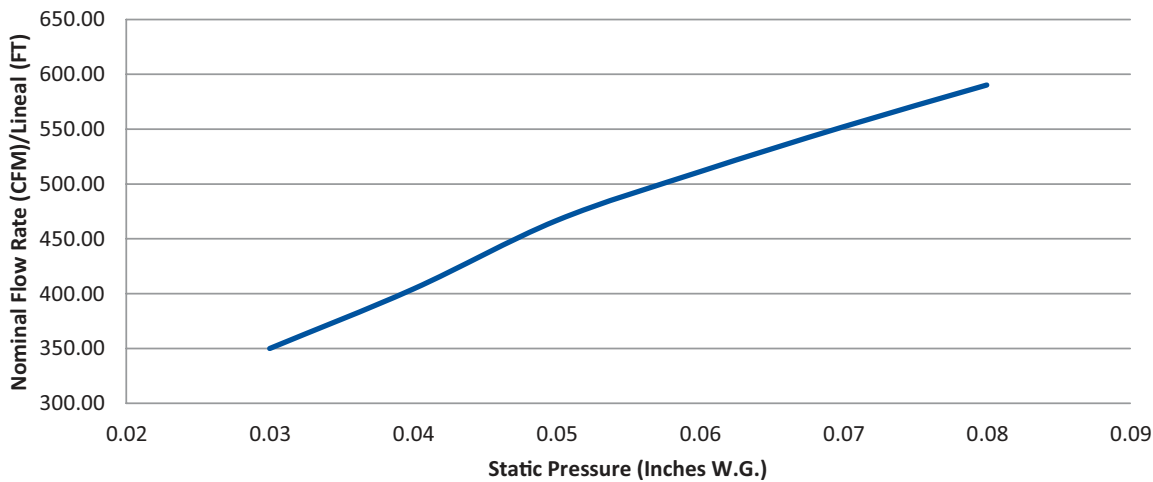
Air Flow Performance Per Linear Foot  
Based on 12" (305mm) Wide Grille



NOTE: Air flow is dependant on grille inlet conditions.

## 14" (356mm) Wide Performance:

Air Flow Performance Per Linear Foot  
Based on 14" (356mm) Wide Grille



NOTE: Air flow is dependant on grille inlet conditions.



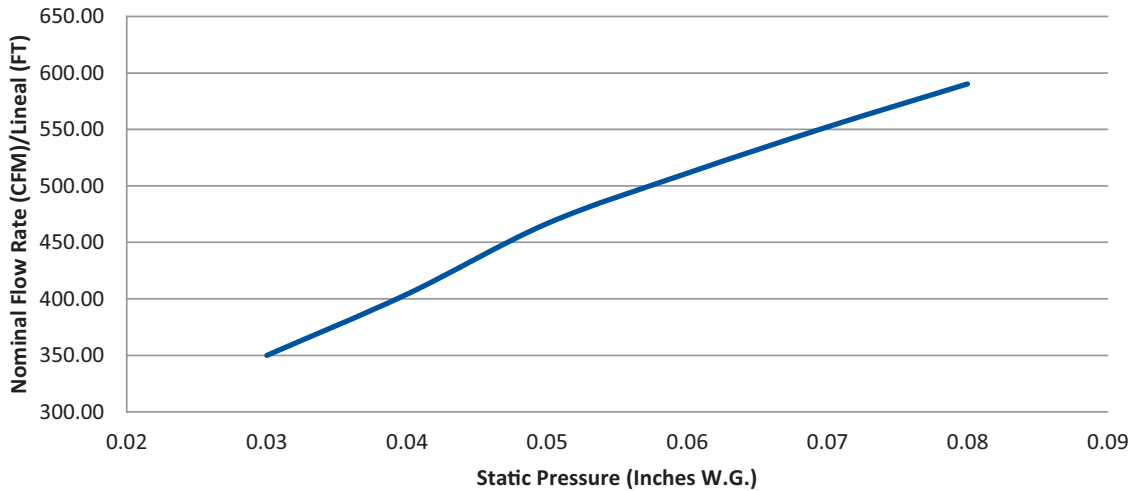
# Linear Grille Configuration

## LGC

MODEL:

### 16" (406mm) Wide Performance:

Air Flow Performance Per Linear Foot  
Based on 16" (406mm) Wide Grille



NOTE: Air flow is dependant on grille inlet conditions.

### SPECIFICATIONS:

- Application:** FlexSys Linear Terminals / Raised Access Floors / Perimeter Trenches
- Grille Rating:** Extruded Aluminum | Conforms to NFPA 90a  
1250 lbs. (567 Kg) Load Strength | 2" (51mm) Deep  
800 lbs. (363 Kg) Load Strength | 1" (25mm) Deep  
NOTE: Grilles 10" (254mm) Wide or More Will Have Reduced Load Strength
- Grille Dimensions:** Custom Available (Specify on Order)
- Flange Configuration:** Flangeless (00) | No Flanges on Sides / Ends  
Continuous Flanged (20) | 1" (25mm) Flange on Sides Only  
Left Flanged (3L) | 1" (25mm) Flange on Sides + Left End  
Right Flanged (3R) | 1" (25mm) Flange on Sides + Right End  
Fully Flanged (40) | 1" (25mm) Flange on All Sides / Ends  
OPTIONAL: 0.5" (13mm) Flange Available (Specify on Order)
- Bar Configuration:** Bar Width: 0.25" (6.4mm) Nominal  
Standard Bar Gap: 0.25" (6.4mm) Nominal  
Minimum Bar Gap: 0.1875" (4.8mm) Nominal  
52% Open Area (Nominal; Based on Standard 0.25" (6.4mm) Bar Width / Bar Gap)



# Linear Grille Configuration

## LGC

MODEL:

**LGC - 06 - 024 - 15 - .250 - 00 - 0**

**PRODUCT DESCRIPTION**  
Linear  
Grille  
Configuration

**BLANK OFF**  
0 = No Blank Off  
B = Blank Off

**GRILLE WIDTH**  
06 = 6" (152mm)  
08 = 8" (203mm)  
10 = 10" (254mm)  
12 = 12" (305mm)  
14 = 14" (356mm)  
16 = 16" (406mm)

**GRILLE CONFIGURATION**  
00 = No Flanges  
20 = Two (2) Flanges (Sides Only)  
3L = Three (3) Flanges (Sides + Left End)  
3R = Three (3) Flanges (Sides + Right End)  
40 = Four (4) Flanges (All Sides + Ends)

**BAR GAP**  
.250 = 0.25" (6.4mm) (Standard)  
.188 = 0.1875" (4.8mm)

**GRILLE LENGTH**  
024 = 24" (610mm)  
036 = 36" (915mm)  
048 = 48" (1219mm)  
060 = 60" (1524mm)  
072 = 72" (1829mm)  
084 = 84" (2134mm)  
096 = 96" (2438mm)

**AIR FLOW ANGLE**  
15 = °15 (Standard)  
00 = 0°  
30 = °30